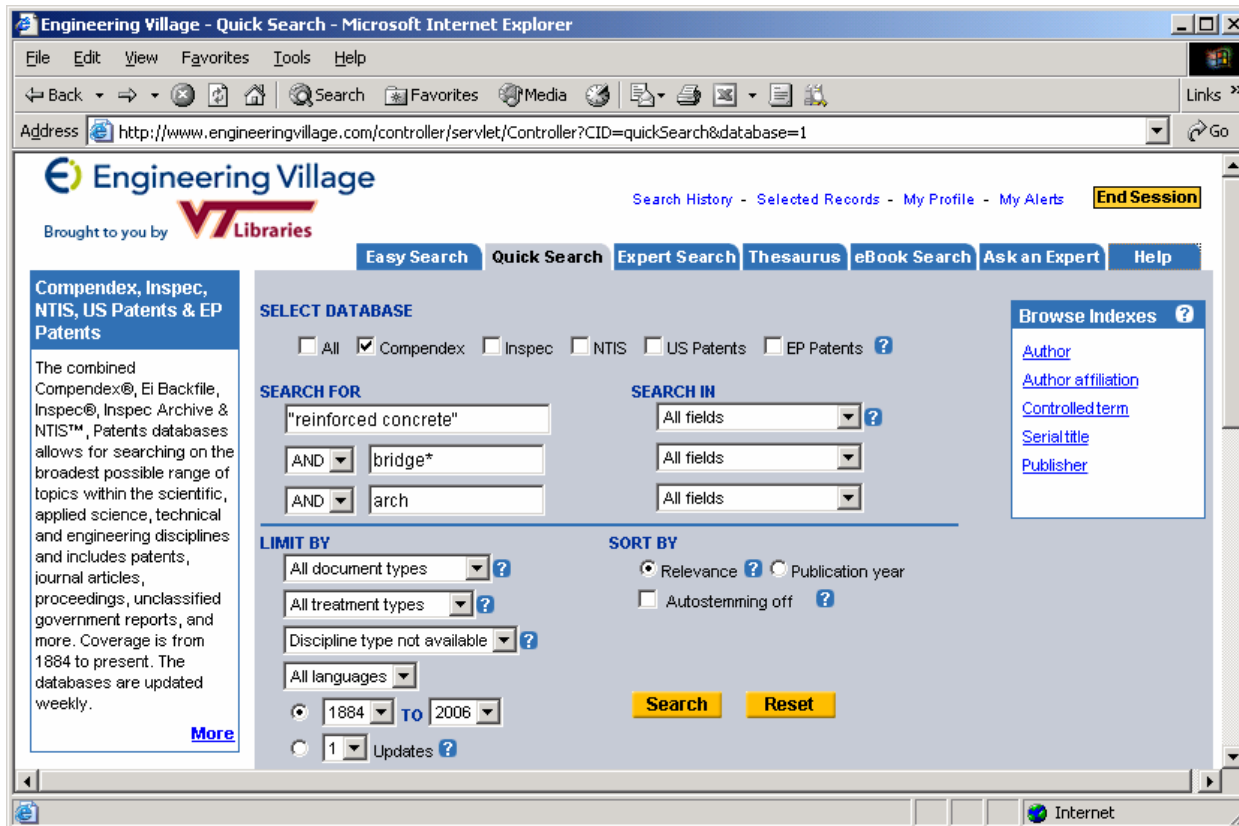


Engineering Village is an interface for searching engineering databases. When you select “Engineering Village” in the Articles / databases list linked from the Library homepage, the following “Quick Search” screen will appear:



Some of the features on the Quick Search screen are:

Select Database - The specific databases available through Engineering Village are listed in the Select Database area of the search screen. In this example, Compendex is selected, but any combination of databases may be chosen.

Search For – The search terms “reinforced concrete”, “bridge*” and “arch” have been inserted in the text boxes. Each of these terms represents an aspect of the search topic. Connecting the terms with an “and” mandates that all three terms appear in the retrieved records. Drop down menus to the right of the search terms can be used to specify what fields to search, such as “title” or “abstract.” Quotes enclose “reinforced concrete” in order to search it as a phrase, and the * after bridge is a wildcard operator, substituting for any number of characters.

Browse Indexes – Author Search - On the right of the screen “Browse Indexes” are listed, the most useful of which is “Author”. When you click on the “Author” link, a screen will appear which allows you to search for and select variations on an author’s name. For instance, “smith, a”, “smith, aaron”, “smith, aron”, “smith, aaron c” etc. If there are more than three variations on the author’s name, you must switch to the “Expert Search” mode tab at the top of the screen. The author browse index is the best way to search on an author’s name because it gives all variations.

Limit By – This area of the screen allows you to set search parameters such as document type (journal, conference, etc.), publication date range, and language of the document.

Sort by – By default, the results will be displayed in reverse chronological order, so the most recent publications appear first. Selecting the “Relevance” option will sort the results according to an EV relevance algorithm.

Search History – The “Search History” link at the very top of the screen allows you to review and combine the searches you’ve made. For instance, a subject search can be combined with an author search to find all articles written by a specific author on a topic.

Search results are displayed as illustrated in the following screen:

The screenshot displays the Engineering Village search results interface. At the top, there is a navigation bar with options like 'Easy Search', 'Quick Search', 'Expert Search', 'Thesaurus', 'eBook Search', 'Ask an Expert', and 'Help'. Below this is a 'Results Manager' section with a search range selector and format options (Citation, Abstract, Detailed record). The main 'Search Results' section shows 884 records with a query string: '+((((("reinforced concrete") WN All fields) AND ((bridge*) WN All fields)) AND ((arch) WN All fields))'. The results are sorted by Relevance. The first result is checked and includes a 'Get VText' button. The right sidebar, 'Refine Results', shows facets for 'Author' (with Wilson, W. M. as the most frequent) and 'Author affiliation'.

Several tasks can be accomplished from this screen:

Selecting records – Documents can be selected individually by checking the box to the left of the citation, as shown in document 1 above. Or ranges of documents can be selected in the Results Manager at the top of the page.

Retrieving records – Once selected, records can be viewed, e-mailed, printed, downloaded, or saved using the Results Manager options. The Download option is used to Export data into Endnote management software.

Retrieving full text – The “Get VText” box provides options for full text retrieval. This may be through online full text, paper format in the library collection, or interlibrary loan.

Faceted searching – In the right column is a list of facets or categories associated with the search, and arranged according to the number of occurrences in the original search. In our search of concrete arch bridges, the author Wilson appears the most frequently. We can limit the search to this author by checking the box in front of the name and clicking the “Include” button. Similarly we can refine the search by other facets in the column, such as author affiliation, document type and language. The faceted search has the same effect as doing an “AND” search with the topic and selected facet.

Personalizing Engineering Village:

Personal accounts – available at My Profile. Allow you to save results to a folder. This would be helpful if you do a search on one computer and want to access the records later from another computer.

RSS feeds - available weekly for your searches on Engineering Village.

E-mail alerts – available from the Search History screen.